



# Bonham House

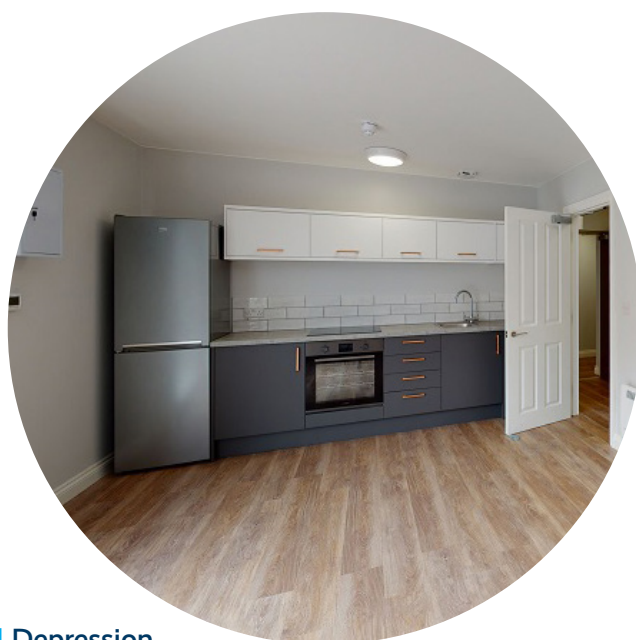
150 Evesham Street, Redditch, B97 4HP

**Bonham House is a development of 16 high quality, self-contained flats in Redditch, providing accommodation and 24-hour support.**

At SIL, we support and sustain the transition of people severely affected by mental illness, including psychotic, affective and personality disorders, from institutional settings to their own tenancy in the community. This enables people in recovery to live independently while receiving the exact package of support they need.

Additional factors may include: Drug and alcohol issues | Depression  
Anxiety | Physical health and mobility issues  
Mild learning difficulties | Forensic history | Fire-setting history.

Our person-centred recovery support is provided by our core on-site team of Recovery Support Workers, with additional support from our Quality and Practice team of mental health professionals (RMNs, Social Workers and OTs).



To make a referral to Bonham House, please contact:

**Jonathan Sierp, Scheme Manager**

on **07356 311875 / 07783 849591** or  
email **[jonathan.sierp@lifeways.co.uk](mailto:jonathan.sierp@lifeways.co.uk)**

For life  
**beyond**  
mental illness



## Community connections

Redditch is a popular town located about 15 miles south of Birmingham. There are plenty of shops, restaurants and takeaways nearby, as well as banks, pharmacies and a library. Popular attractions include The Forge Mill Needle Museum, Bordesley Abbey and the Kingfisher Shopping Centre.

If you want to escape and explore the outdoors, Redditch has the Arrow Valley Country Park on its doorstep. Based on the River Arrow there are 900 acres of public open space and it incorporates the 27 acres Arrow Valley Lake, popular for dinghy sailing, fishing and birdwatching.

## Jack's story

I was in hospital for about five years before finding SIL, going around in the system - just stuck. I've been here for two and a half years now, and the team have been so supportive. There's never any judgement, and always someone around if I need to talk. I'm working towards moving out soon, and starting a course for peer support to help others struggling within the health system.



## Our referrals process

- 1** Call or email us and we'll arrange a suitable time to discuss your enquiry. If we agree our service seems a good fit, we'll send you our referral pack and start gathering all the information we need to complete the referral process.
- 2** Once we've received your completed referral form and background documentation, we'll make arrangements to start our assessment. This will include a scheme visit, discussions with key individuals, and time with the person referred to introduce SIL and understand their views and goals for their recovery support.
- 3** Once we have completed our comprehensive assessment, this will be sent along with costings to the commissioning / case management team for approval.
- 4** Once funding is agreed, we'll match the person with a suitable flat and start the tenancy application process. As soon as the tenancy offer is back, we'll work together with the existing multidisciplinary and care teams to arrange a thorough discharge, and/or a transition plan.

To find out more about SIL  
visit [sil-uk.com](https://sil-uk.com) or email [info@sil-uk.com](mailto:info@sil-uk.com)

**SIL**  Specialist mental  
health support