



yes  
to independence

## Queen Street

Rushden, Northamptonshire

Life-changing supported living  
at the heart of the community

care  
solutions   
part of lifeways group



**“Queen Street is a lovely quiet service in a great location. It has a nice family feel and the ladies who live here are very happy.”**

Manager, Queen Street

# Welcome to Queen Street

**Queen Street is a homely terraced house where people are supported to live independent and fulfilling lives.**

The house has three bedrooms, two living rooms, a dining room, fitted kitchen and a utility room. There are three shared bathrooms. Outside there's a small garden with a patio for everyone to enjoy. It is ideally located close to all the local amenities in Rushden.

When you choose supported living, you're choosing to live independently, safe and secure behind your own front door.

There's peace of mind in knowing the Lifeways team is on-hand, providing tailored support that helps people to lead more fulfilling lives, surrounded by like-minded people.



Life at Queen Street is suitable for people with learning disabilities or autism.

We are ready to welcome an older lady who would appreciate a quiet and relaxed house. The ladies living here enjoy a slow pace of life but have varied interests including playing bowls, gardening, going out for lunch and knitting.

Whoever moves in will be supported to pursue their own hobbies and interests, and take advantage of everything the local community has to offer.

# Valued in your community

**There are few things more rewarding than feeling like an active and valued part of the community.**

Queen Street is ideally located a few moments from the bustling High Street in Rushden, with its shops, cafes and pubs. There are also takeaways, banks, a pharmacy and post office.

For people who like to stay active, there are local gyms and the Splash Leisure Pool as well as some lovely outdoor spaces for walks – Spencer Park and Hall Park are both within a mile of the service.

---

## It's good to know...



We're in a popular street in central Rushden.



Local supermarkets include Tesco, Sainsbury's and Iceland.



There are GP surgeries, dentists and opticians within a few miles of the house.



There's a bus stop across the street with regular services into Wellingborough and Kettering.



Wellingborough station is a ten-minute drive away, with routes into Nottingham, London and Corby.



There is on-street parking available for people with cars.

A photograph of two women in a kitchen. The woman in the foreground is wearing glasses and a blue sweater with white polka dots, smiling broadly. She is holding a white plate filled with a colorful salad of cucumbers, tomatoes, and other vegetables. The woman in the background has long brown hair and is wearing a grey sweater, also smiling. The kitchen background shows wooden cabinets and a knife on a magnetic strip.

# yes to friendships

“Since living at a Lifeways service I have become more confident and independent. I am able to make everyday decisions with the help from my team, who support me in a consistent way; this is very important to me. My self-esteem has grown with the support I receive and I couldn’t be happier.”

Person supported by Lifeways

# Five reasons to choose the Lifeways Group

## **yes to stability.**

Our stability speaks for itself. Since 1995 we've grown to become the UK's largest provider of supported living for adults. So when you're comparing providers, it's good to know that our steadfast support is founded on over 25 years of proven outcomes.

## **yes to reassurance.**

Our size brings reassurance. It allows us to invest in our people and services. And it's the reason we've been able to open 900 new apartments in 65 communities since 2015. Everyone deserves unique support in a home they'll feel proud of – and that's exactly what we provide.

## **yes to local.**

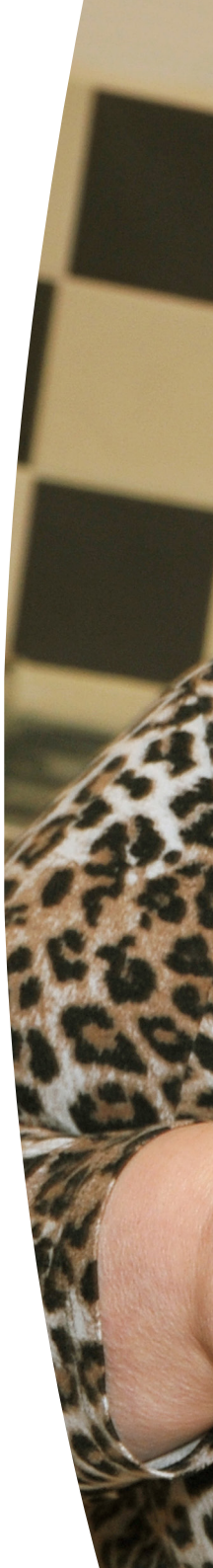
Our hearts are in our local communities. We're proud to support people in more than 1,000 locations across the UK. But we're even more proud that every service is run by trusted local teams, each providing neighbourly support that feels close to home.

## **yes to relationships.**

Our people make all the difference. So we make sure everyone is valued and all of our support workers achieve the Care Certificate qualification. Over a quarter of our team have been with us for over five years and some have even been with us from the very beginning, helping to create rewarding relationships, improved outcomes and excellent continuity of care.

## **yes to quality.**

Our purpose is to improve lives. It's as simple as that. We help almost 5,000 people to live with hope and independence, with every member of our team sharing the same commitment to quality in everything we do. We hire the best in the sector into our highly skilled and dedicated Quality team, who work to ensure our CQC ratings are something we can be proud of.





# yes to ambition

## So what happens next?

It all starts with an informal chat with one of our specialist assessors. Together with each individual, they will build a clear understanding of their needs and preferences, making sure that they make the choice that is right for them.

They'll then be on hand to guide individuals, families and professionals through the referral and assessment processes, and won't stop until the kettle's on, and the move is complete.

# Supporting people to live the life they choose.

Care Solutions has been supporting people as part of the Lifeways Group since 2014. At the Lifeways Group, our focus is *you*. We want to become a trusted partner on your personal journey. Learning from the challenges you've already overcome, before tailoring our support to help you achieve more.

## Why us?

We believe that anyone can achieve the extraordinary. And that's why we exist. To understand every individual and support each different dream. Creating homes to feel proud of and places where lives feel fulfilled.

## Make a referral or arrange a visit

Learn more about independent living at Queen Street, make a referral or arrange a visit by contacting us:

Call **0333 321 4881**

Email [referrals@lifeways.co.uk](mailto:referrals@lifeways.co.uk)

[lifeways.co.uk](https://lifeways.co.uk)

**lifeways**  
yes to you